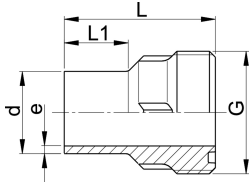




PROGEF Standard Einschraubteil SDR11

Ausführung:

- Material: PP-H
- Konventionelle Stumpfschweissung nach DVS 2207 Teil 11
- IR = (IR Plus®) kompatibel. Zu verschweissen mit Parameter: PP-H



d [mm]	SM	code	weight [lb]	G [inch]	L [mm]	L1 [mm]	e [mm]
20	IR	727 848 506	0,026	1	54	26	1,9
25	IR	727 848 507	0,044	1 1/4	57	26	2,3
32	IR	727 848 508	0,064	1 1/2	60	25	2,6
40	IR	727 848 509	0,104	2	63	25	3,7
50	IR	727 848 510	0,137	2 1/4	66	25	4,6
63	IR	727 848 511	0,236	2 3/4	69	25	5,8
75	IR	727 848 512	0,379	S107.5x3.6	66	24	6,8
90	IR	727 848 513	0,401	S107.5x3.6	66	24	8,2
110	IR	727 848 514	0,569	S127.5x3.6	66	25	10,0

The technical data are not binding and not expressly warranted characteristics of the goods. They are subject to change. Our General Conditions of Sale apply.

Georg Fischer Piping Systems Ltd, Postfach, CH-8201 Schaffhausen/Switzerland Phone +41 -(0)52-631 1111 e-mail: info.ps@georgfischer.com Internet: <http://www.piping.georgfischer.com>